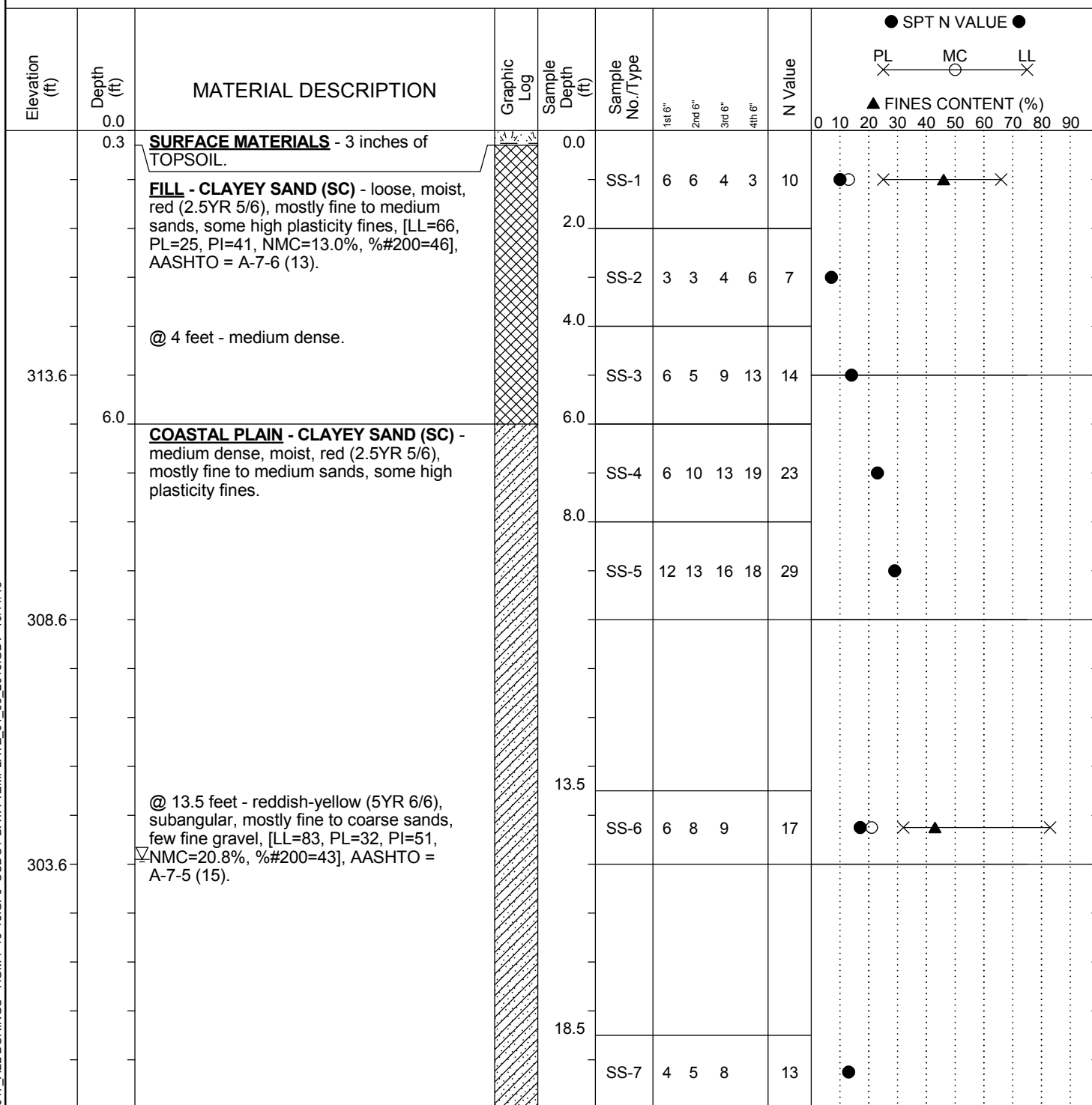


SCDOT Soil Test Log

Project ID:		P027662			County:	Lexington/Richland		Boring No.:	B-58		
Site Description:		Carolina Crossroads I-20/26/126 Corridor Improvement Project						Route:	Site 39		
Eng./Geo.:		AKS	Boring Location:		204+85.63		Offset:	L:130.273'	Alignment:	Proposed	
Elev.:	318.6 ft	Latitude:	34.039822	Longitude:	-81.093664		Date Started:		4/4/2018		
Total Depth:		102.4 ft	Soil Depth:	102.4 ft	Core Depth:	0 ft		Date Completed:		4/6/2018	
Bore Hole Diameter (in):		3.5	Sampler Configuration		Liner Required:		Y	(N)	Liner Used:	Y	(N)
Drill Machine:		D-50	Drill Method:	RW		Hammer Type:	Automatic		Energy Ratio:	86.5%	
Core Size:		N/A	Driller:	J. Millwood		Groundwater:	TOB	14.9 ft		24HR	32.5 ft



LEGEND

Continued Next Page

SAMPLER TYPE		DRILLING METHOD	
SS - Split Spoon	NQ - Rock Core, 1-7/8"	HSA - Hollow Stem Auger	RW - Rotary Wash
UD - Undisturbed Sample	CU - Cuttings	CFA - Continuous Flight Augers	RC - Rock Core
AWG - Rock Core, 1-1/8"	CT - Continuous Tube	DC - Driving Casing	